

# UPDATE:

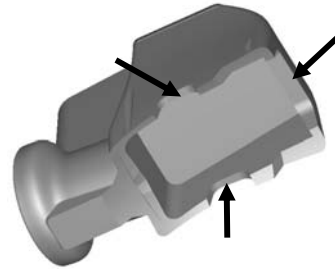
Select Increments began using a new amplifier for the Intra-Pod in 2011 due to the sudden discontinuation of the previous amplifier by the manufacturer. Our Dealers are aware of this and will slowly be updating their information to reflect this. Although the retail price of our console has not changed, the amplifier that is now included is a newer and better amplifier with more options! The only drawback is that the new amplifier will not fit in the Intra-Pods' recessed amplifier cavity. This is not such a bad thing, as most customers tend to install the amplifier elsewhere in the vehicle, such as under the back seat, so that adjustments to the amplifier controls can be made much more easily. We recommend that you use a type of security or tamper-resistant screw to affix the amplifier to reduce the chance of theft. We are sorry for any inconvenience this change may cause, but we feel that your ability to access the controls on any amplifier is a good thing. If the amplifier is installed in the pods' amp cavity, adjustments to the controls are extremely difficult without removing the pod.

# READ THIS FIRST FOR AN EASY INSTALL:

## **MOST IMPORTANT TIPS & F.A.Q.**

- 1) The threaded holes in the amplifier cavity and under the speaker are used in the molding process and mean nothing for your install.
- 2) If your radio has unused RCA Inputs, use them! If it has an RCA Sub Input, even better! If you don't have RCA's and you're going to use actual speaker wires as the inputs. That's okay, but it is recommended that you use a High-to-Low adapter so you can still run RCA's into the amplifier for the input signal. These little boxes are available at Radio Shack or your local car audio or auto parts store and are usually around \$15.
- 3) **THE ABSOLUTE MOST IMPORTANT COMPONENT IN YOUR CAR AUDIO SYSTEM IS THE RADIO!** Your amplifier(s) and speakers can only replicate the signal they receive. A generic radio simply won't give you a crisp, clean signal for which to work with and will seriously inhibit an otherwise great-sounding system. If you're looking to upgrade to a better radio, get one with two sets of (4 volt or better) RCA pre-amp outputs AND an RCA Subwoofer pre-amp output.
- 4) When you're conducting sound tests on the Intra-Pod, check your FM sound as well as your CD sound. No matter what radio you have, they all produce a better signal with a higher dB when playing a CD. The exact same song played on FM simply won't sound as good or get as loud, that's just the way it is.
- 5) **If you are using our amplifier, you must install it elsewhere such as under the back seat because it won't fit in the Intra-Pod amplifier cavity. This will make adjustments to the amps controls much easier.** If you are using your own amp and it fits in the Intra-Pod amp cavity, makes sure to run the wires through the vent cavities.

Note: RUN RCA's OR SPEAKER INPUT WIRES TO THE AMPLIFIER AWAY FROM YOUR AMP's POWER AND REMOTE WIRES, TO REMOVE INTERFERENCE (i.e. noise or 'hum' coming through speakers.) BRING THE REMOTE AND POWER WIRE IN THROUGH A SEPARATE VENT.



- 6) The best place to run the amplifier power wire through the firewall and to your Jeep's battery is on the bottom right-hand corner of the firewall on the passenger's side, just above where the floor slopes upward and meets the firewall. You'll see a little painted metal area that's exposed, that's where you want to drill a hole to run the amplifier power wire through. Mount the wire's fuse block in the engine compartment, above your battery. Drill two pilot holes in the firewall and run two screws through the fuse block and into the firewall.
- 7) **The ground wire for the amplifier should be as short as possible.** For best results, mount it by way of a ring terminal to one of the seat bolts that mount the seats to the floor. Large ring terminals such as this can be purchased at your local car audio or auto parts store. (Or you can use the smaller ring terminal that comes with the amplifier wiring kit and drill a smaller hole, use a smaller screw and run it into the floor of the vehicle. Either way, make sure the terminal is sitting on bare metal.) Remove the seat bracket and scrape some paint out of the way to expose bare metal on the floor boards for the ring terminal to rest on. FOLLOWING THIS METHOD WILL ENSURE A GREAT GROUND! **We also recommend that you ground your radio at the same place as the amplifier.** This can be accomplished by cutting the ground wire at the back of the radio and attaching it to a new wire, which is run from your radio to the amplifier's ground location. This method will reduce all ground loops between your radio and amplifier, reducing the risk of alternator 'whine'.
- 8) Don't go nuts fastening the Intra-Pod to the floor, just enough to hold it securely without splitting the two tabs up front. The third and final screw is mounted through the base of the Intra-Pod and into the floor, behind the speaker; this one can go in tighter since it won't split the plastic.
- 9) Use solder for wire connections, if possible.

## **SPEAKER INSTALLATION:**

Unless your speaker can drop inside the grille mounting ring, you'll want to install the speaker with the mounting ring on top of the speaker with the edge facing upward to accept the grille cover. **DEFINITELY USE THE INCLUDED FOAM GASKET.** It goes between the pod and speaker.

## **SEAL THE HOLE!!**

Make sure to seal the extra space around the speaker wires where they go through the grommet hole with a glue gun, wax, etc. so no air escapes and the internal space is completely sealed. If air can escape there it can result in a vibration noise or whistling noise.

# INSTRUCTIONS

## CALL US OR EMAIL IF YOU HAVE ANY QUESTIONS!

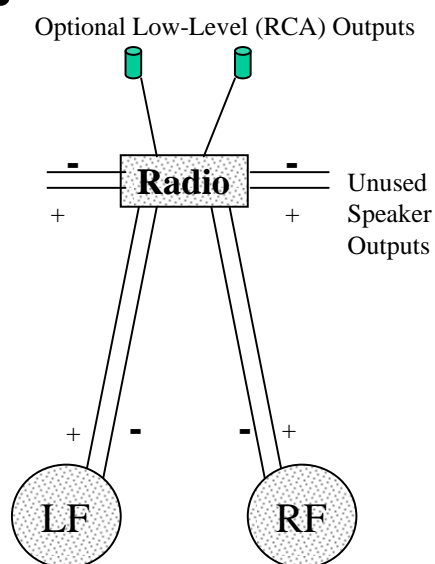
If you've installed an amplifier before or if you already have one or more in your vehicle, you probably know how you're going to integrate the Intra-Pod into your vehicle's current audio system. Should you require assistance, give us a call.

These instructions are geared toward those who purchased the Intra-Pod with the amplifier and speaker included and who have a basic car audio system. Following these instructions will help even if you supply your own components.

**First**, place the Intra-Pod between the seats as it will be when installed. Make sure you can shift into 2<sup>nd</sup>, 4<sup>th</sup>, and reverse without hitting the front of the unit. (A select few may have to install the unit slightly toward the rear of the vehicle.) If using an amp that fits in the pods' amp cavity, mark areas by vents to bring PWR, GRD, REM, & RCA wires through the carpet. Remove the Intra-Pod and cut two small slits in the carpet, one where the REM, GND, & PWR wires will come through the carpet and connect to the amplifier, and one where the RCA Input signals will do the same.

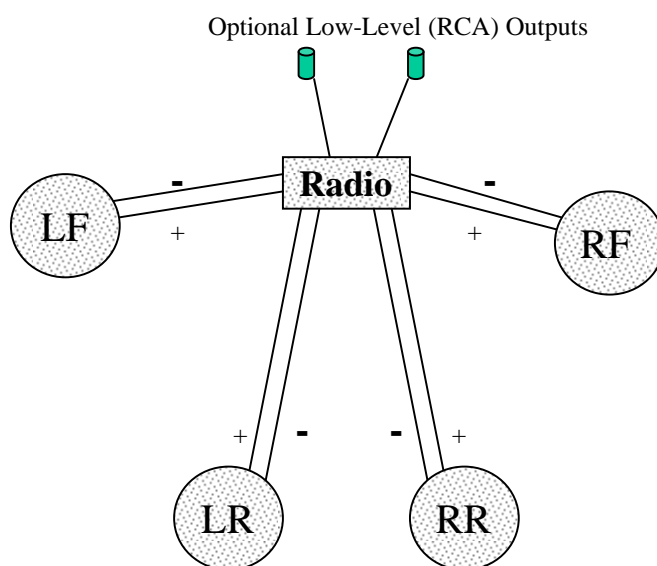
We now need to determine what kind of audio system you currently have and the best way to integrate the Intra-Pod. Below are two examples, one of which, should be a basic representation of your vehicle

### A:



**-If your vehicle currently has two speakers.** This could be two speakers in the dash, or two in the rear, or just a sound bar. If this describes your vehicle, you'll want to make sure that these current speakers are connected to the two front speaker outputs of your radio. You'll want to use the two unused rear speaker outputs as the high level (speaker) input for the amplifier. If your radio has low level (RCA) outputs then use them instead. **Remember to not use the high level and the low level inputs at the same time.**

### B:

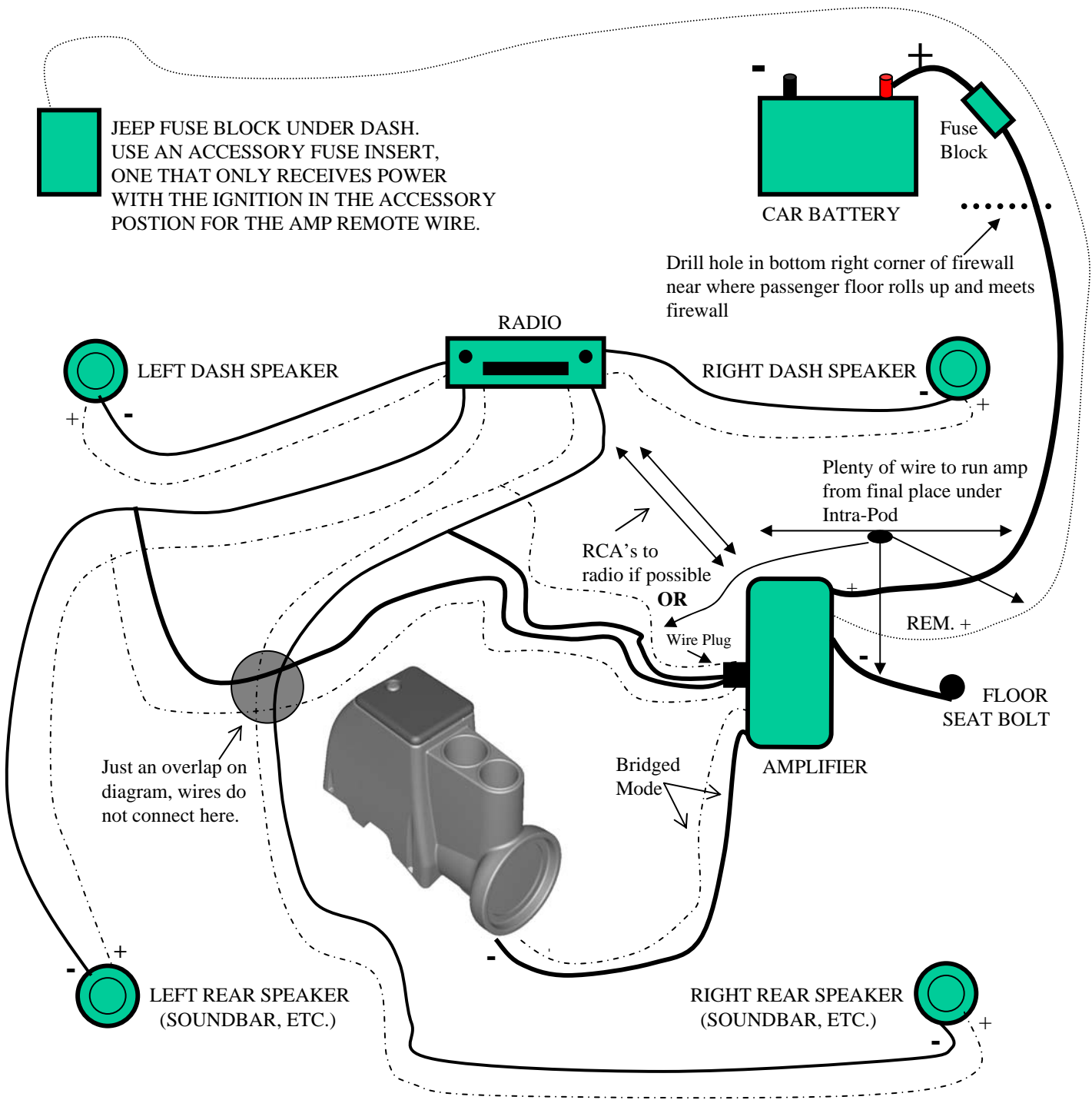


**-If your vehicle currently has four or more speakers.** The amplifiers input signal can be derived by tapping off the two rear speaker outputs of the radio and send this signal to the high level (speaker) input of the amplifier. If your radio has low level (RCA) outputs then use them instead. **Remember to not use the high level and the low level inputs at the same time.** (i.e. use either the rear speaker wire inputs OR RCA inputs, not both!)

## SEE WIRING DIAGRAM ON NEXT PAGE

If using an amp that fits in the unit's amp cavity, run the RCA input wires as well as the REM., BATT. and GND wires from their points of origin, under the carpet and up through the slits in the carpet, pulling enough wire through to connect to the amplifier with the amp sitting in the passenger seat so you can adjust the amps controls for now. If using our amp or one that doesn't fit in the cavity, simply run all wires from where amp will rest in Jeep. **Note: Running the amplifier power lines right next to the speaker lines may affect sound quality and is not recommended.** Consult your amplifier owner's manual for proper wiring.

Wire the amplifier (GROUND FIRST) and the Intra-Pod (with speaker installed) sitting between the seats as if the unit were already installed. Continue connecting PWR, REM and RCA Inputs. Once this is completed, it's time to fine tune / sound test, and get the settings exactly where you want them. Try various music with little and lots of bass to find the limits of your subwoofer. Make sure that you test the sound while very loud, as it would be driving at 55 mph with the top down. You want everything to sound as good as it can at this typical listening level!



**IT IS RECOMMENDED THAT THE REMAINING AIR SPACE AROUND THE SPEAKER WIRES (THROUGH THE GROMMET HOLE) IS PLUGGED! AT HIGH POWER, THIS AIR LEAK COULD RESULT IN A WHISTLING NOISE.**

# Installing the Unit:

If using an amp that fits the amp cavity, cut wires to proper length for final install and check that you can shift into 2<sup>nd</sup>, 4<sup>th</sup>, and Reverse. Using the torx tamper-resistant bit, run the Tamper-Resistant Screws through the two plastic screw tabs, located on either side, toward the front of the unit and through the floor of the vehicle. The screws should be run through on a slight angle, *far inside* the tab so the tabs won't split. With the speaker removed, run the last screw through the base of the unit, behind where the speaker goes, and through the floor of the vehicle. **If you are using a powerful drill, do not run the screws in too tightly, doing so may split the plastic tab and compromise security.**

**DEFINITELY USE THE INCLUDED FOAM SPEAKER GASKET.** It goes between the pod and speaker.

**Speaker and Grille:** If you purchased the unit with speaker included, installing it along with the grille is tricky. This particular speaker has a large metal basket; the screw holes on the speaker don't perfectly line up with those on the grille back plate. Here's how you do it: After hooking up the speaker wires to the speaker, place it in the cavity and run four phillips screws through at the 12, 3, 6, and 9 o'clock positions. Next, put the grille back plate against the speaker with the grille plate holes flush against the speaker foam rim and the ring facing upward for the mesh grille cover to slide on later. Line the grille back plate screw holes up to the remaining unused screw holes on the actual speaker as best you can. As you can see, you have to run the screws in on an angle to go through the back plate and catch the speaker holes and in to the Intra-Pod. Use the remaining four phillips-head screws for this. It is best get all four screws started before tightening them. If your using your own subwoofer, make sure that the cone excursion doesn't extend out so far on bass notes that it hits the the mesh grille and causes vibrations. If so, you may have to put the subwoofer in first, then the grille back plate, then the mesh grille as was just described above.

Note: The Legacy® subwoofer provided is rated at 800 watts *peak* power. This means it can realistically handle up to 200 watts of *continuous* power. The Legacy® amplifier can produce a solid 200 watts of continuous power when bridged. When your radio volume is turned way up and your subwoofer is at the point where it is producing 'muffled' sound, turn your radio down a little or you may blow the speaker! The power ratings for the components are compatible, but if you don't have a really clear signal coming from your radio (as described on the other page) you may blow the speaker at very high volumes.

-Amplifier tray measures 11" x 8" x 3+"

-Speaker Mounting depth of up to 8" with a maximum magnet diameter of about 5 3/8"

**Select Increments is not responsible for any defects with amplifiers, speakers, or wiring kits. If you experience any problems with these components, you must contact the manufacturers of these components for replacement parts. Contact information and warranty cards are included with the audio components.**



Select Increments  
524 Street Road  
West Grove, PA 19390  
email - sales@selectincrements.com  
Phone: 610-345-9044  
Fax: 610-345-9045

[www.selectincrements.com](http://www.selectincrements.com)